

2012-2013 APPLICATION

for International Undergraduate Admission



BEFORE YOU APPLY

1. Select an academic field of study.

If you are undecided about your major, apply to the KU College of Liberal Arts and Sciences. After you begin your studies at KU, you can choose, change, or add another field of study, if you are eligible (pages 7-8).

2. Review admission requirements and deadlines on the Admission Options charts (pages 4-6).

The requirements for admission and deadlines depend on

- the KU school and major you choose,
- whether you are a first-year or transfer student,
- the semester you will begin.

3. Review the costs for tuition, fees, and living expenses on the enclosure or online at iss.ku.edu/admissions/cost.shtml

First-year applicants (freshmen) may enter programs in these five schools: the College of Liberal Arts and Sciences (CLAS); the schools of Architecture, Design and Planning; Engineering; Journalism and Mass Communications; or Music.

Beyond the first year: Before applying for admission to some programs and professional schools, you must complete prerequisite courses. These include the schools of Business, Education, Health Professions, Nursing, Pharmacy, and Social Welfare. See the Admission Options charts (pages 4-6).

APPLICATION FEE

The nonrefundable \$75 application fee is payable by check, money order, or online by credit card. Checks must be from a bank in the U.S.A and must show the U.S. mailing address of the bank. Checks should be written to The University of Kansas. There are no waivers of the application fee.

APPLICATION CHECKLIST

Send these required materials to the Office of International Undergraduate Admissions by the deadline. Your application will not be considered complete or be reviewed until all materials have been received. Failure to meet deadlines and incomplete applications will result in delays or deferral to another semester.

1. Complete and sign paper or online application form. iss.ku.edu/admissions
2. Pay nonrefundable application fee of \$75.
3. Send official academic transcripts of all secondary and post-secondary studies. Submit educational gap essay, if needed.
4. Request official TOEFL or IELTS score reports to be sent directly to KU from the testing organization.
5. Send additional materials required for some academic programs. See the Admission Options charts (pages 4-6).
6. If you will be on an F-1 or J-1 student visa, send proof of adequate financial resources (page 11).
7. Send a copy of the biographical information page of your passport. If you are in the U.S., send a copy of your immigration documents (e.g., I-20 or DS-2019 and I-94).
8. If someone is helping you with your application, you must complete, sign, and send the Third Party Release Form (page 12), so that we can communicate with that person. This is required if an educational agent is handling your application.
9. After admission, if you wish to live on campus, visit the Student Housing Department website to sign a contract. housing.ku.edu



The Jayhawk is
KU's mascot.

ONLINE RESOURCES

Academic programs: ku.edu/academics

Academic catalog: catalog.ku.edu

International viewbook:

www.viewbook.ku.edu/international

Costs & scholarships: tuition.ku.edu

If you have questions

ISSS Undergraduate Admissions

Telephone: 1-785-864-2616

Fax: 1-785-864-3404

issapps@ku.edu

iss.ku.edu/admissions

Send application and \$75 fee to

The University of Kansas
International Undergraduate
Admissions, Strong Hall
1450 Jayhawk Blvd., Room 17
Lawrence, KS 66045-7518 U.S.A.

ACADEMIC RECORDS

KU requires official academic records from every high school, college, or university that you have attended, including intensive language study. **Official transcripts must be mailed in the school's sealed envelope directly from each school to KU.** All documents must be in the native language of instruction and have English translations. Documents must be original, showing official school seal and signature of administrative official. Your full name must be written on each document. Records should be complete, providing detailed information including dates of enrollment; courses for each term of study; grades earned; and diploma, certificate, or degree completed. The grading scale and number of credit hours attempted should be noted when possible. **All records become the property of KU and will not be returned or forwarded.**

First-year applicants (freshmen) have completed secondary school but have not yet enrolled in a regular session at any college or university. Submit official transcripts, mark sheets, diplomas, certificates, or official examination results proving completion of secondary education (high school), listing courses taken and grades achieved. Your final high school transcript, examination scores, diploma, or certificate must be presented after you graduate and before enrollment.

Transfer applicants have completed secondary school and have been enrolled in a college or university. Submit official transcripts of all post-secondary-level course work, including college, university, ESL, and/or vocational programs. If you have completed fewer than 24 credit hours of university or college course work (one full year of study), since high school, you also must submit your high school records. **You may not disregard your college record and apply as a freshman first-year student. All post-secondary records must be submitted.**

EDUCATIONAL GAP ESSAY

If there was any period of time after high school when you were not enrolled in an educational program, write and submit a short essay about your activity during that time.

FINANCIAL RESOURCE STATEMENT

Applicants who will have F-1 or J-1 status must submit proof of financial support. Financial documents must be dated and less than 6 months old indicating the type of currency; an English translation of financial documents must be provided. If the bank account is not in the applicant's name, please attach a statement signed by the account holder indicating the relationship to the student for whom the support will be provided. Acceptable financial documentation is described in the Student's Financial Resource Statement section (page 11) of the application.

If you will have a nonimmigrant status other than F-1 or J-1, proof of financial support is not necessary.

TRANSFER CREDIT

Course work completed at an accredited higher education institution may be considered for transfer credit at KU. For your classes to be evaluated for transfer credit, an official record must be mailed from each school you have attended. Credential evaluation service is offered only to admitted KU students. Read about transfer credit on our website. iss.ku.edu/admissions/transfer.shtml

SCHOLARSHIPS

KU offers a limited number of partial, merit-based scholarships for new undergraduate international students. However, KU does not offer financial assistance or full scholarships that pay for all expenses. Read detailed information on our website. iss.ku.edu/admissions/scholarship.shtml

Note: Scholarships are highly competitive and are awarded only to the top candidates in the applicant pool who have submitted complete applications by the January 15 deadline for fall semester. The office will contact you if you are being considered for a scholarship and inform you if additional items are needed.

GRADING SCALE

GPA = grade-point average.
A = 4.0, excellent, 4 points
B = 3.0, very good, 3 points
C = 2.0, average, 2 points
D = 1.0, poor but passing, 1 point
F = 0, failing, 0 points

Conversion to the 4.0 scale will be determined by a KU admissions officer.

COLLEGE PREP CURRICULUM

For a description of the college preparatory curriculum, specific credentials, and grades required for individual countries, visit our website. iss.ku.edu/admissions/requirements.shtml

ENGLISH LANGUAGE REQUIREMENT

International applicants whose native language is not English must submit official Test of English as a Foreign Language (TOEFL) or International English Language Testing System (IELTS) scores with the application for admission to KU undergraduate degree programs. Scores must be less than two years old, and they must be sent directly from the testing agency to the University of Kansas (KU TOEFL code 6871).

There is no required minimum score; undergraduate applicants may be admitted with any level of English proficiency. Based on test scores, students are offered regular or provisional admission. Provisional admission allows students to improve their English proficiency by taking full-time ESL courses or a combination of ESL and university courses until they have achieved proficiency. **Provisional admission** is not offered without TOEFL or IELTS scores. **Regular admission** permits students to enroll in one or more university courses in their first semester. KU uses the TOEFL/IELTS scores to inform students whether they are eligible for immediate enrollment in university courses or how long they will likely take ESL courses before they can enroll in university courses.

Complete details of this policy are posted in the KU Provost's Policy Library. policy.ku.edu/academic.shtml

Regular Admission

- TOEFL iBT (Internet-based test): 70 or higher overall score
- TOEFL (paper-based test): 530 or higher overall score
- International English Language Testing System (IELTS), academic format: 6.0 or higher overall score

Provisional Admission

- TOEFL iBT (Internet-based test): overall score below 70
- TOEFL (paper-based test): overall score below 530
- International English Language Testing System (IELTS), academic format: overall score below 6.0

PROFICIENCY REQUIRED FOR ENROLLMENT

Upon arrival, regardless of test scores, new international students must report to the Applied English Center for an evaluation of their English proficiency. Scores required to receive a waiver from the AEC English proficiency test are higher than the scores required for regular admission. Students with the TOEFL or IELTS scores listed below may receive a waiver from taking the AEC English proficiency test or ESL courses.

- TOEFL iBT (Internet-based test): 23 or higher on the Reading, Writing, and Listening sections
- TOEFL (paper-based test): 57 or higher for each section score and 4.5 or higher on the Test of Written English (TWE)
- International English Language Testing System (IELTS), academic format: 6.0 or higher for each part and a total score of 6.5

Students with lower TOEFL or IELTS scores are required to take the AEC English proficiency test before enrollment. Scores on the AEC English proficiency test determine how many ESL and how many university courses may be taken.

Detailed information about each individual student's assessed level and KU English requirements are sent with the admission letter. You may read more on our website. iss.ku.edu/admissions/english-requirement.shtml

Application for intensive English study as a nondegree-seeking student must be made directly to the Applied English Center (see Other KU Offices and Resources, page 8). Undergraduate degree-seeking applicants who have TOEFL or IELTS scores and also need intensive English courses do not need to make a separate application to study in the Applied English Center.

ADVISING OUTSIDE THE U.S.

Contact educationusa.state.gov for referral to an educational adviser in your country.

SAFETY AND CRIME ON CAMPUS

The annual security report about KU safety policies, crime statistics, and campus resources is available online at ku.edu/safety or on paper from the KU Office of the Vice Provost for Student Success, Strong Hall, 1450 Jayhawk Blvd., Room 133, Lawrence, KS 66045-7518 U.S.A. 1-785-864-4060.

The University of Kansas prohibits discrimination on the basis of race, color, religion, sex, national origin, age, ancestry, disability, veteran status, sexual orientation, marital status, and parental status.

ADMISSION OPTIONS

for first-year and transfer students

If you enter KU as a first-year student, you may enter the College of Liberal Arts and Sciences or the School of the Arts in CLAS; or the Schools of Architecture, Design and Planning; Engineering; Journalism and Mass Communications; or Music. Eligible transfer students also may apply to enter these schools. Apply as early as possible. Some programs may fill before the deadlines. If you are undecided about your major, apply to the College of Liberal Arts and Sciences.

MONTHS FOR EACH SEMESTER OF STUDY

Fall August–December

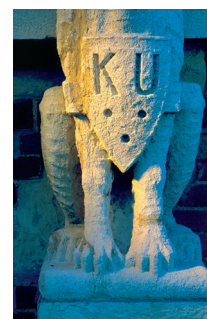
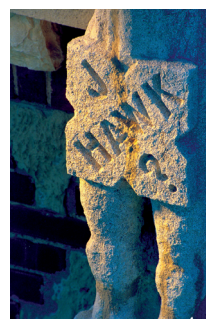
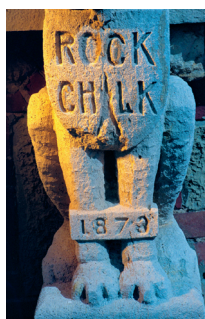
Spring January–May

Summer June & July

DEADLINE FOR SCHOLARSHIPS

Jan. 15, fall only

SCHOOL	REQUIREMENTS	WHEN TO APPLY
<p>College of Liberal Arts & Sciences (CLAS)</p> <p>clas.ku.edu</p>	<p>First-year students</p> <ol style="list-style-type: none"> High school diploma with a <i>college preparatory</i> curriculum. 2.5 grade-point average (GPA) or equivalent. 	<p>Transfer students</p> <ol style="list-style-type: none"> At least 24 credit hours from an accredited college or university with minimum 2.5 GPA or equivalent. Eligible for readmission to any institution previously attended. If you have fewer than 24 credit hours, high school transcripts are required, with minimum 2.5 high school GPA or equivalent. <p>Note: If you have taken any post-secondary studies after high school graduation, including college, university, ESL, and/or vocational programs, you are considered a transfer student and must submit academic records from all schools attended.</p>
<p>School of the Arts <i>within the College of Liberal Arts & Sciences</i></p> <p>sota.ku.edu</p> <p><i>Admission is competitive. Contact School of the Arts.</i></p>	<p>First-year students</p> <ol style="list-style-type: none"> High school diploma with a <i>college preparatory</i> curriculum. 2.5 GPA or equivalent. Visual Art majors must submit answers to 3 essay questions and portfolio of 10 to 20 images to the Department of Visual Art. Dance majors must audition. Film & Media Studies majors must complete FMS 100 & FMS 380 with 2.5 GPA. Theatre majors must complete prerequisite courses with 2.5 GPA. 	<p>Transfer students</p> <ol style="list-style-type: none"> 3.0 GPA or higher from college or university. Visual Art majors must submit answers to 3 essay questions and portfolio of 10 to 20 images to the Department of Visual Art. To transfer credit, Visual Art majors must submit transcripts and portfolios for review. Dance majors must audition. Film & Media Studies majors must complete FMS 100 & FMS 380 with 2.5 GPA. Theatre majors must complete prerequisite courses with 2.5 GPA.
<p>School of Architecture, Design & Planning <i>Department of Architecture</i></p> <p>sadp.ku.edu</p> <p><i>Admission is competitive. Early application is encouraged for transfer students. Contact Architecture Admissions Office.</i></p>	<p>First-year students</p> <ol style="list-style-type: none"> High school diploma with a <i>college preparatory</i> curriculum. 3.5 GPA or equivalent. 3 years of science including physics; 3 years of math including trigonometry, precalculus, or calculus (preferred); and at least 3 art or drawing classes. SAT math score of 600 or ACT math, science & composite scores of 26 or higher. TOEFL or IELTS scores that qualify for regular admission. Complete the Architecture Interest Profile at sadp.ku.edu/architecture/admissions/undergrad. 	<p>Transfer students</p> <ol style="list-style-type: none"> At least 24 credit hours with a 3.5 GPA at an accredited college or university. One semester of required math and physics with grades of C or higher. TOEFL or IELTS scores that qualify for regular admission. Complete the Architecture Interest Profile at sadp.ku.edu/architecture/admissions/undergrad.



SCHOOL	REQUIREMENTS	Transfer students	WHEN TO APPLY
<p>School of Architecture, Design & Planning: <i>Department of Design</i></p> <p>sadp.ku.edu/design</p> <p><i>Admission is competitive. Contact Department of Design.</i></p>	<p>First-year students</p> <ol style="list-style-type: none"> High school diploma with a college preparatory curriculum. Minimum 3.0 GPA or equivalent AND SAT math score of 590 or ACT math score of 25. Design applicants must submit answers to 3 essay questions & submit a portfolio of 10 to 20 images to the Department of Design. TOEFL or IELTS scores that permit part-time enrollment in KU university courses. 	<ol style="list-style-type: none"> 24 or more credit hours at an accredited college or university with a 3.0 GPA or higher. (<i>Due to the sequence of the design studios, the degree will require 4 years to complete.</i>) Design applicants must submit answers to 3 essay questions & submit a portfolio of 10 to 20 images to the Department of Design. To transfer credit, design majors must submit transcripts for review. TOEFL or IELTS scores that permit part-time enrollment in KU university courses. 	<p>First-year applicants Fall February I Spring October I Summer February I</p> <p>Transfer applicants Fall February I Spring October I Summer February I</p>
<p>School of Engineering <i>including architectural engineering</i></p> <p>enr.ku.edu</p> <p><i>Competitive admission: Meeting minimum requirements does not guarantee admission. Selection is offered to best applicants.</i></p>	<ol style="list-style-type: none"> High school diploma with a college preparatory curriculum. Minimum 3.0 GPA on a 4.0 scale in high school. Minimum SAT math score of 540 or minimum ACT math score of 22 (for architectural engineering, computer engineering, computer science, electrical engineering, and interdisciplinary computing: minimum SAT math score of 640 or minimum ACT math score of 28). If you have had an educational gap of longer than one semester, please include an essay detailing your activity during that time. 	<ol style="list-style-type: none"> Transfer applicants are evaluated on a case-by-case basis. Overall minimum college 2.5 GPA on a 4.0 scale. Minimum SAT math score of 540 or minimum ACT math score of 22 or grades of C or higher in calculus. If you have had an educational gap of longer than one semester, please include an essay detailing your activity during that time. 	<p>First-year applicants Fall April I Spring October I Summer March 15</p> <p>Transfer applicants Fall April I Spring October I Summer March 15</p>
<p>School of Journalism and Mass Communications</p> <p>www.journalism.ku.edu</p> <p><i>Admission is competitive.</i></p>	<ol style="list-style-type: none"> 3.0 GPA or equivalent AND Combined critical reading + math SAT score = 1110 or composite ACT 24 or higher AND English proficiency as determined by AEC evaluation. 	<ol style="list-style-type: none"> 24 or more credit hours at an accredited college or university with a 2.5 or higher GPA or equivalent AND English proficiency as determined by AEC evaluation AND Completed or enrolled in JOUR 101 the semester of application AND Grade of C or higher in JOUR 101 (admission is rescinded if a C or higher is not earned). 	<p>Fall February I Spring September I Summer February I</p>
<p>School of Music</p> <p>music.ku.edu</p> <p><i>Contact School of Music.</i></p>	<ol style="list-style-type: none"> High school diploma with a college preparatory curriculum. 2.75 GPA or equivalent. Music majors will be admitted to their specific majors only after an audition. 	<ol style="list-style-type: none"> At least 24 credit hours from an accredited college or university with minimum 2.75 GPA or equivalent. Music majors will be admitted to their specific majors only after an audition. To transfer credit, performance majors must audition. 	<p>First-year applicants Fall February I Spring October I Summer December I</p> <p>Transfer applicants Fall February I Spring October I Summer December I</p>

ADMISSION OPTIONS

beyond the first-year level

First-year students who plan to enter the schools and programs listed on this page usually begin in the College of Liberal Arts and Sciences and apply to these programs as sophomores, juniors, or seniors. Eligible transfer students also may apply to enter these schools. Apply as early as possible. Some programs may fill before the deadlines.

MONTHS FOR EACH SEMESTER OF STUDY

Fall August–December

Spring January–May

Summer June & July

DEADLINE FOR SCHOLARSHIPS

Jan. 15, fall only

SCHOOL	REQUIREMENTS	WHEN TO APPLY
College of Liberal Arts & Sciences (CLAS) collegesas.ku.edu	<p>Apply for admission to KU. Complete an application for the major in the department office, meet specific GPA requirements in KU courses, and take certain prerequisites; not all students meeting minimum requirements are admitted.</p> <p>For details, consult collegesas.ku.edu/students/admissions_requirements.shtml, the academic department, or KU's Academic Catalog, catalog.ku.edu.</p>	<p>Sophomore (30 to 45 hours) Deadlines vary by major.</p>
School of Business business.ku.edu	<p>Apply to the School of Business during the semester when you will complete the preadmission requirements.</p> <ol style="list-style-type: none"> 1. Complete 60 college credit hours, including ACCT 200, ACCT 201, DSCI 301, IST 301, ECON 142, and ECON 144. Completion of the following courses is strongly recommended: PSYC 104 and one Culture and Society (SC) course. 2. Achieve a minimum GPA of 2.5 in all course work, in all professional course work (business and economics classes), in course work completed at KU, and in professional course work completed at KU, excluding activity hours. <p>Admission is competitive. Applicants satisfying minimum requirements are ranked based on GPA in all professional course work. Applicants are then admitted based on their position in this ranking and available space in the School of Business. Students are encouraged to contact an adviser in the School of Business, 206 Summerfield Hall. Contact Business Student and Academic Services office for information.</p>	<p>Junior (60 hours or more) Fall February 15 Spring September 15</p>
School of Education soe.ku.edu	<ol style="list-style-type: none"> 1. Have a cumulative 2.5 GPA for health and physical education or a 2.75 or higher GPA for all other majors. 2. For teacher education programs, complete core of specific prerequisites with 2.75 GPA, and pass 3 sections of the Pre-Professional Skills Test before submitting application 3. Complete requirements in the School of Education section of KU's Academic Catalog, catalog.ku.edu. <p>Admission in selective programs is competitive. Consult a pre-education adviser immediately upon entering KU.</p>	<p>Teacher Education: Sophomore (30 hours or more) Spring September 22 No admission for summer or fall</p> <p>HSES & HPE: Junior (45 hours or more) Fall February 1 Spring September 22</p>
School of Health Professions www.healthprofessions.kumc.edu	<p>Admission does not occur until junior or senior year. Admission requirements and prerequisites vary by major. Consult a pre-health professions adviser during your first year at KU. Students interested in careers in health sciences should contact the program of interest as early as possible.</p> <p>See the School of Health Professions website for program information and required application forms.</p>	<p>Junior or Senior (entry levels vary by major) Deadlines vary by major.</p>
School of Nursing www2.kumc.edu/son	<ol style="list-style-type: none"> 1. Have a 2.5 or higher GPA. 2. Take prerequisite courses. 3. Submit online application available beginning July 1 from www2.kumc.edu/son/academicinformation/bsn.htm <p>Consult the prenursing adviser upon entering KU. Admission is competitive.</p>	<p>Junior (62 hours or more) Fall October 15 No admission for summer or spring. Late applications considered if space permits.</p>
School of Pharmacy pharm.ku.edu	<ol style="list-style-type: none"> 1. Have a 2.5 or higher GPA and take all required prerequisite courses. 2. Complete School of Pharmacy application form. 3. PCAT examination and interview are required. <p>Admission is competitive. Consult the School of Pharmacy.</p>	<p>Junior (68 hours or more) Fall January 15 No admission for summer or spring.</p>
School of Social Welfare www.socwel.ku.edu	<ol style="list-style-type: none"> 1. Have a 2.5 or higher GPA. 2. Complete MATH 101, ENGL 101, and ENGL 102. 3. Download application from www.socwel.ku.edu/academics/bsw/admissions/index.shtml. <p>Consult the presocial work adviser during your first year.</p>	<p>Sophomore (30 hours or more) Fall only October 1, February 1 Applicants in U.S.A. June 1</p>

UNDERGRADUATE FIELDS OF STUDY

for first-year and transfer students

This page and the next list the fields of study and undergraduate degrees that KU offers. You'll need to select a prospective field of study when you fill out the KU application for admission, or you may select Undecided.

SCHOOL OF ARCHITECTURE, DESIGN & PLANNING

Architectural Studies (BA) 4-year (preprofessional)
Architecture (MArch) 5-year (professional)
Design – Industrial Design (BFA)
Design – Interior Design (BFA)
Design – Photo Media (BFA)
Design – Visual Communication (Graphic Design) (BFA)
Design – Visual Communication (Illustration) (BFA)

SCHOOL OF THE ARTS

Dance (BA, BFA)
Film & Media Studies (BA, BGS)
History of Art (BFA)
Theatre (BA, BGS) – Performance
Theatre (BA, BGS) – Theatre, Culture, & Society
Theatre Design (BFA)
Visual Art (BA)
Visual Art (BFA) – Ceramics
Visual Art (BFA) – General
Visual Art (BFA) – Metalsmithing/Jewelry
Visual Art (BFA) – Textiles/Fibers
Visual Art Education (BAE)

SCHOOL OF BUSINESS

Accounting (BSB)
Business Administration (BSB)
Finance (BSB)
Information Systems (BSB)
Management & Leadership (BSB)
Marketing (BSB)
Supply Chain Management (BSB)

COLLEGE OF LIBERAL ARTS & SCIENCES

African & African-American Studies (BA, BGS) – African Studies
African & African-American Studies (BA, BGS) – African & African-American Studies
African & African-American Studies (BA, BGS) – Arabic & Islamic Studies
American Studies (BA, BGS)
Anthropology (BA, BGS)
Applied Behavioral Science (BA, BGS)
Astronomy (BA, BS)
Atmospheric Science (BS)
Behavioral Neuroscience (BS)
Biochemistry (BA, BS)
Biology (BA)
Biology (BS) – Biodiversity, Ecology, & Evolutionary Biology
Biology (BS) – Cellular Biology
Biology (BS) – Genetics
Biology (BS) – Neurobiology
Biology (BS) – Organismal Biology
Biology (BS) – Teaching Biology
Chemistry (BA, BS)
Chemistry (BA) – Biological
Chemistry (BA, BS) – Environmental
Chemistry (BS) – Biochemistry
Chemistry (BS) – Chemical Physics
Classical Antiquity (BA, BGS)
Classical Languages (BA, BGS)
Communication Studies (BA, BGS)
East Asian Languages & Cultures (BA) – Chinese Language & Literature
East Asian Languages & Cultures (BA) – Double Language
East Asian Languages & Cultures (BA) – East Asian Studies with Chinese, Japanese, or Korean Language
East Asian Languages & Cultures (BA) – Japanese Language & Literature
Economics (BA, BGS, BS)
English (BA, BGS)
English (BA, BGS) – Creative Writing
English (BA, BGS) – Language, Rhetoric, & Writing
Environmental Studies (BA, BGS, BS)
French (BA)
French (BA) – French & Italian Studies
French (BA) – Italian
Geography (BA, BGS, BS)
Geography (BS) – Geographical Information & Analysis
Geography (BS) – Physical Geography
Geology (BA, BS)
Geology (BS) – Earth & Space Science Licensure
Geology (BS) – Engineering Geology
Geology (BA, BS) – Environmental Geology
Geology (BS) – Geophysics
Germanic Languages & Literatures (BA)
Global & International Studies (BA)
History (BA, BGS)
History of Art (BA, BGS)
Human Biology (BA)
Humanities (BA)
Latin American Studies (BA)
Liberal Arts & Sciences (BGS)
Linguistics (BA, BGS)
Mathematics (BA, BS)
Microbiology (BA, BS)
Philosophy (BA, BGS)
Physics (BA, BS)
Physics (BS) – Interdisciplinary Physics
Physics (BS) – Preprofessional
Political Science (BA, BGS)
Prebusiness
Preclinical Laboratory Science
Precyrotechnology
Predentistry
Pre-Education
Pre-Education Elementary
Pre-Education Secondary
Pre-Health Information Management
Pre-Health Professions
Prejournalism
Prelaw
Premedicine
Prenursing
Pre-Occupational Therapy
Pre-Optometry
Prepharmacy
Prephysical Education/Health Teacher Education
Prephysical Therapy
Prephysician's Assistant
Prerespiratory Care
Presocial Welfare
Presport Science/Community Health
Preveterinary Medicine
Psychology (BA, BGS)
Religious Studies (BA, BGS)
Slavic Languages & Literatures (BA) – Polish
Slavic Languages & Literatures (BA) – Russian
Slavic Languages & Literatures (BA) – South Slavic Studies
Sociology (BA, BGS)
Spanish (BA)

DEGREE DEFINITIONS

BACHELOR OF ARTS (BA)

The traditional liberal arts degree. It requires study in a major subject area and in a broad range of liberal arts and sciences, including a foreign language and a laboratory science.

BACHELOR OF GENERAL STUDIES (BGS)

Similar to the BA in that it requires study in a major subject area and the liberal arts. However, it requires neither the study of a foreign language nor a laboratory science.

BACHELOR OF SCIENCE (BS)

A specialist's degree. It has fewer liberal arts requirements and requires more hours of study in the major subject area. Most of the degrees offered by KU's professional schools, such as the BSN (bachelor of science in nursing) and BSEE (bachelor of science in electrical engineering) have requirements similar to those for the BS.

CERTIFICATE PROGRAM (CERT)

CERT stands for certificate program. Please contact the school for more information.

Speech-Language-Hearing (BA, BGS)

Undecided (CLAS)

Women's Studies (BA, BGS)

SCHOOL OF EDUCATION

Athletic Training (BS)
Community Health (BSE)
Elementary Education (BSE)
Health & Physical Education (BSE)
Middle-Level Education (BSE)
PK-12 (BSE) – Foreign Language
Secondary Education (BSE)
Sport Science (BSE) – Exercise Science
Sport Science (BSE) – Sport Management
Unified Early Childhood (BSE)

SCHOOL OF ENGINEERING

Aerospace Engineering (BS)
Architectural Engineering (BS)
Chemical Engineering (BS)
Chemical Engineering (BS) – Biomedical
Chemical Engineering (BS) – Environmental
Chemical Engineering (BS) – Petroleum
Chemical Engineering (BS) – Premedical
Civil Engineering (BS)
Civil Engineering (BS) – Environmental
Computer Engineering (BS)
Computer Science (BS)
Electrical Engineering (BS)
Engineering Physics (BS)
Engineering Physics (BS) – Aerospace Systems
Engineering Physics (BS) – Chemical Systems
Engineering Physics (BS) – Digital Electronic Systems
Engineering Physics (BS) – Electromechanical Control Systems
Interdisciplinary Computing (BS)
Mechanical Engineering (BS)
Mechanical Engineering (BS) – Biomechanical
Petroleum Engineering (BS)
Engineering Undecided

SCHOOL OF JOURNALISM & MASS COMMUNICATIONS

News & Information (BSJ)
Strategic Communication (BSJ)
Journalism Undecided

Continued ►

SCHOOL OF MUSIC

Bassoon (BM)
Clarinet (BM)
Double Bass (BM)
Euphonium (BM)
Flute (BM)
French Horn (BM)
Harp (BM)
Jazz Studies (BA)
Music Composition (BM)
Music Education (BME)
Music Theory (BA, BM)
Music Therapy (BME)
Musicology (BA, BM)
Oboe (BM)
Organ (BM)
Percussion (BM)
Piano (BM)
Piano, Organ, & Orchestral Instruments (BA)
Saxophone (BM)
Theatre & Voice (BFA)
Trombone (BM)
Trumpet (BM)
Tuba (BM)
Viola (BM)
Violin (BM)
Violoncello (BM)
Voice (BA, BM)

SCHOOL OF PHARMACY

Pharmacy (PD)

SCHOOL OF SOCIAL WELFARE

Social Work (BSW)

PROGRAMS OFFERED AT KU EDWARDS CAMPUS, OVERLAND PARK, KAN.

Business Administration (BBA)
Developmental Psychology (BA, BGS)
English Literature, Language, & Writing (BA, BGS)
Molecular Biosciences (BS)
Public Administration (BA, BGS)
Systems Analysis & Design (CERT)

The KU Edwards Campus is in metropolitan Kansas City, a 45-minute drive from the Lawrence campus. Programs are designed for upper-division students who live independently off campus and who have their own transportation. Most classes are offered in the late afternoon and evening.

PROGRAMS OFFERED AT KU MEDICAL CENTER, KANSAS CITY, KAN.

SCHOOL OF HEALTH PROFESSIONS

Clinical Laboratory Science (BS)
Clinical Laboratory Science (BS) – Molecular Biotechnology
Cytotechnology (BS)
Health Information Management (BS)
Occupational Studies/Occupational Therapy (BS/MOT)
Respiratory Care (BS)
Diagnostic Cardiac Sonography (CERT)
Diagnostic Ultrasound Technology (General and Vascular) (CERT)
Nuclear Medicine Technology (CERT)

SCHOOL OF NURSING

Nursing (BSN)

KU Medical Center is in the metropolitan Kansas City area, about an hour's drive from the Lawrence campus. It offers educational programs through the Schools of Health Professions, Medicine, and Nursing. Students enter these programs after two or more years of post-secondary preparatory study.

OTHER KU OFFICES AND RESOURCES

 You may contact these offices directly for additional information.

Applied English Center

aec.ku.edu
aec@ku.edu

College of Liberal Arts & Sciences

collegesas.ku.edu
clas109@ku.edu

CLAS: School of the Arts

sota.ku.edu
sota@ku.edu

Disability Resources

disability.ku.edu

Graduate Studies

graduate.ku.edu
graduate@ku.edu

School of Architecture, Design & Planning

sadp.ku.edu
archku@ku.edu
design@ku.edu

School of Business

business.ku.edu
bschoolundergrad@ku.edu

School of Education

soe.ku.edu
soeadvising@ku.edu

School of Engineering

enr.ku.edu
kuenr@ku.edu

School of Health Professions

www.healthprofessions.kumc.edu
healthprofessions@kumc.edu

School of Journalism & Mass Communications

jschool@ku.edu

School of Music

music.ku.edu
music@ku.edu

School of Nursing

www2.kumc.edu/son
soninfo@kumc.edu

School of Pharmacy

pharm.ku.edu
pharmacy@ku.edu

School of Social Welfare

www.socwel.ku.edu/academics/bsw/
admissions
admissionsBSW@ku.edu

Student Housing Department

housing.ku.edu
housing@ku.edu

University Registrar

registrar.ku.edu
registrar@ku.edu

For information on costs and scholarships, go to tuition.ku.edu

INTERNATIONAL UNDERGRADUATE STUDENT APPLICATION



INSTRUCTIONS

Refer to admission requirements and deadlines, pages 4, 5, and 6. Fill out both sides by typing or printing in English. Send application and \$75 nonrefundable application fee (check or money order from a bank in the U.S.A. payable to The University of Kansas) to **KU International Undergraduate Admissions Strong Hall, 1450 Jayhawk Blvd., Room 17 Lawrence, KS 66045-7518 U.S.A.**

IS THIS THE CORRECT FORM FOR YOU?

Are you a U.S. citizen or has your U.S. permanent resident, asylee, or refugee status been approved? yes no

If you answered "yes" to this question, you are filling out the wrong form, and it will cause delays in processing your application. You need to fill out the application for U.S. citizens and U.S. permanent residents. Information is available from 1-785-864-3911, adm@ku.edu, or admissions.ku.edu (online application). An individual in any nonimmigrant status or with a pending application for permanent residence must apply as an international student.

APPLICANT INFORMATION

Please complete the name section **exactly** the way your name appears (or will appear) on your passport. Also submit a photocopy of the biographical information page of your passport.

1. Surname (Family name)		Given name (First name)		Middle name		Preferred name	
2. Birth date (month/day/year)				3. Gender <input type="radio"/> male <input type="radio"/> female		4. Is English your native language? <input type="radio"/> yes <input type="radio"/> no	
5. Current mailing address (number, street, P.O. box, etc.)							
6. City		7. Region, state, province, etc.		8. Postal code		9. Country	
10. Email (IMPORTANT: Check your email often. We use email to communicate admissions decisions & other official information. Add issapps@ku.edu to your email address book to avoid delivery to spam or junk folder.)				11. Telephone number			
12. Parent or legal guardian: Surname (Family name)		Given name (First name)		Middle name			
Parent or legal guardian: Surname (Family name)		Given name (First name)		Middle name			
13. Permanent non-U.S. home address required (number, street, P.O. box, etc.)							
14. City		15. Region, state, province, etc.		16. Postal code		17. Country	
18. Country of citizenship							
19. City of birth				20. Country of birth			
21. If known, nonimmigrant status preferred: <input type="radio"/> F-1 <input type="radio"/> J-1 <input type="radio"/> Other _____							
If J-1 is requested, country of legal permanent residence: _____ and job position in home country: _____							
22. If in U.S., current nonimmigrant status (attach copy of I-94 card and immigration document): <input type="radio"/> F-1 <input type="radio"/> J-1 <input type="radio"/> Other _____							
If currently in U.S. as F-1, name of institution that issued your current I-20: _____							
Will you be traveling outside the U.S. immediately before coming to KU? <input type="radio"/> yes <input type="radio"/> no							
23. Please list dependents (spouse or unmarried, minor children) who will enter on dependent visa and live with you while you attend school in the U.S.:							
Surname	Given name	Date of Birth (month/day/year)	Country of Birth	Country of Citizenship	Gender	Relationship	

ENROLLMENT INFORMATION

24. Have you ever applied to KU before? yes no
 If "Yes," have you attended KU before yes no If "Yes," please give your KUID# _____
25. Are you currently enrolled at the KU Applied English Center? yes no
26. When will you enter KU? Year: _____ Semester: fall (August) spring (January) summer (June)
27. Do you plan to seek a degree from KU? yes no 28. Your KU classification will be First-year Transfer Special
29. Enter your proposed field of study from the list on pages 7-8 or write "Undecided" if you have not yet decided what to study. _____
30. Did members of your family attend or graduate from KU? (name): _____ (relationship) _____
31. How did you hear about KU? _____

TEST SCORE HISTORY—TOEFL, IELTS, SAT, ACT

Enter any TOEFL, IELTS, SAT, or ACT tests that you have taken or plan to take before admission. The TOEFL or IELTS is required for admission to any KU undergraduate degree program unless you are a government-sponsored or university-sponsored student. You must request that official scores be sent by the testing organization directly to the University of Kansas by the application deadline. If we do not receive official scores by the deadline, your application will be incomplete. SAT or ACT scores are only required for specific programs.

Name of test	Date taken or scheduled month / day / year	Score (if known)	Has official report been sent to the University of Kansas?	If yes, date sent to KU month / day / year
1. _____	_____	_____	<input type="radio"/> yes <input type="radio"/> no	_____
2. _____	_____	_____	<input type="radio"/> yes <input type="radio"/> no	_____
3. _____	_____	_____	<input type="radio"/> yes <input type="radio"/> no	_____

EDUCATION INFORMATION

You must list all educational institutions you have attended or plan to attend before entering KU, including intensive language programs, beginning with the current or most recent school. List them in order of attendance. Failure to fully report all schools attended may result in denial of admission or dismissal. If necessary, you may attach a separate piece of paper to list all schools attended.

Are you currently enrolled in a school? yes no May we communicate with your high school counselor? yes no

If you are a first-year applicant (page 2), you must list and send official transcripts from all secondary institutions you have attended from grades 9 to 12.

HIGH SCHOOL EDUCATION (secondary school)

School name	City / State / Country	month/year	month/year
1. _____	_____	from _____	to _____
2. _____	_____	from _____	to _____
3. _____	_____	from _____	to _____

If you are a transfer applicant (page 2), you must list and send official transcripts from all post-secondary institutions you have attended, including college or university, vocational, or English as Second Language programs.

POST-SECONDARY EDUCATION (college or university, including English as Second Language programs)

1. _____ School name (in native language with English translation—do not abbreviate)	_____ from _____ to _____ City / State / Country month / year month / year	_____ degree earned
2. _____ School name (in native language with English translation—do not abbreviate)	_____ from _____ to _____ City / State / Country month / year month / year	_____ degree earned
3. _____ School name (in native language with English translation—do not abbreviate)	_____ from _____ to _____ City / State / Country month / year month / year	_____ degree earned

EDUCATIONAL GAP ESSAY

If there was period of time after high school when you were not enrolled in an educational program, write and submit a short essay about your activity during that time.

STUDENT'S FINANCIAL RESOURCE STATEMENT

Credible documentation of financial support must be submitted before an I-20 or DS-2019 can be prepared.

F-1 visa: The I-20 is the document needed to apply for an F-1 student visa. When applying for the F-1 visa, the applicant must prove that enough funds are available to cover the first year of expenses and should be prepared to prove that funds will be available for the duration of studies.

J-1 visa: The DS-2019 is needed for a J-1 Exchange Visitor (student) visa. Applicants for J-1 visas must be prepared to show that funding is available for the entire J-1 program.

For a current estimate of expenses, go to this website:
iss.ku.edu/admissions/cost.shtml

Documentation should be less than six months old. Indicate the type of currency. An English translation of all documentation must be provided. If documentation is not in the applicant's name, please attach a signed statement from the account holder indicating his or her relationship to the applicant and intent to finance the applicant's education. Acceptable documentation includes the following:

Bank statement from checking, savings, stock holdings, and/or certificate of deposit.

Bank letter on letterhead indicating date account opened, average balance, and current balance.

Scholarship or sponsorship letter verifying amount, source, and dates of award.

APPLICANT'S SIGNATURE

I certify that all information given on this application is complete and correct and will be used to determine my admission status. I authorize the university to verify information I have provided. I agree to notify the proper officials of the institution of any changes in the information provided. I understand that all application materials become the property of the University of Kansas and that the application fee is nonrefundable.

I understand that this application is a legally binding document and falsification or omission of any of the academic information will void my admission, cancel my enrollment, and result in appropriate disciplinary action.

Signature of prospective student or person preparing this form

Date

AGENT OR THIRD PARTY RELEASE

Is a third party handling your application? yes no

If someone else is completing this application for you, or if you wish to authorize sharing information about your application with a third party (educational agent, family member, counselor, friend, etc.) you are required to complete the Third Party Release Form (page 12) and submit it by the deadline with the application for admission. Failure to provide this information will result in delay in processing or deferral of admission.

MAILING APPLICATION AND FEE

Send the application and \$75 nonrefundable application fee to the address below. The check should be made payable to The University of Kansas; it must be drawn from a bank in the U.S.A. and show the mailing address of a U.S. bank.

**The University of Kansas
International Undergraduate Admissions
Strong Hall, 1450 Jayhawk Blvd., Room 17
Lawrence, KS 66045-7518
U.S.A.**

**Telephone: 1-785-864-2616
Fax: 1-785-864-3404
issapps@ku.edu
iss.ku.edu/admissions**

INTERNATIONAL UNDERGRADUATE ADMISSIONS THIRD PARTY RELEASE FORM

DO YOU NEED TO COMPLETE THIS FORM?

If someone (family member, friend, educational agency, or agent) is assisting with your application, you must identify that person. You and your agent must complete this form. Otherwise, you may leave this form blank.

Applicant's complete name

Date of birth

APPLICANT'S RELEASE STATEMENT (student must sign and date)

I authorize the following person to represent me in applying for admission to the University of Kansas (KU). This representative may contact the KU International Undergraduate Admissions Office on my behalf. The KU International Undergraduate Admissions Office may communicate directly with this representative.

Applicant's signature

Date

NAME OF MY REPRESENTATIVE (please print)

Agent's name

Name of agency

Agent's email

Agent's phone

Agent's fax

Address where admission letter, immigration document, and welcome packet should be mailed:

Applicant's mailing address (item 5, page 9)

Applicant's permanent non-U.S. address (item 13, page 9)

Other address: _____

Whose address is this? Applicant Agent

AGENT'S RELEASE STATEMENT (agent must sign and date)

As the above named applicant's representative, I promise to submit the applicant's actual documents, including educational records, essays, references, communications for the University of Kansas, and all other materials, and to provide accurate translations of these documents. I will act as a conduit for communications from the University of Kansas to the applicant and from the applicant to the University of Kansas and will not edit, omit, or editorialize.

Agent's signature

Date

RETURN THIS FORM TO:

The University of Kansas
International Undergraduate Admissions
Strong Hall, 1450 Jayhawk Blvd., Room 17
Lawrence, KS 66045-7518
U.S.A.

Fax: 785-864-3404
issapps@ku.edu